

FACTS, Inc.

Measure ... Control ... Inform

What We Do...

FACTS is a global supplier of ON-LINE MEASUREMENT, PROCESS CONTROL, and INFORMATION MANAGEMENT solutions to the plastics and rubber industries.

Call us at 330-928-2332.

www.facts-inc.com

Factory Automation Controls & Technical Services

Total Solutions For:

Extrusion:

- Hose
- Pipe
- Tube
- Profile
- Sheet
- Film
- Tire Tread
- Wire/Cable

Calender

Mixing

Thermoforming

Converting

Blow Molding

Injection Molding

Compounding

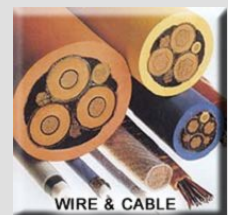
Coating

Drive Systems

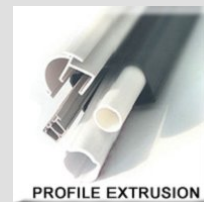
**CONTROLLING THE
PROCESS GLOBALLY**



OVER 800 SYSTEMS IN 13 COUNTRIES



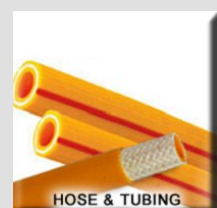
WIRE & CABLE



PROFILE EXTRUSION



SHEET & FILM

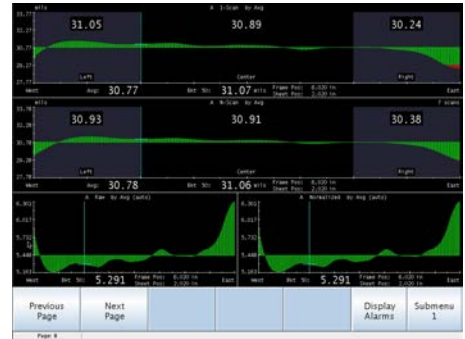


HOSE & TUBING

Doc . 1500-12

Measure

On-Line Measurement Technologies



FACTS has successfully integrated a wide range of sensor technologies that become cost effective applied measurement solutions. We help our Customers get “on- spec” faster and stay there longer! These technologies include gauging, opacity, width, length, diameter, temperature, pressure, thickness, and vision.

Total Measurement Solutions Based On:

ON-CAL 3 Calender Gauging	Terahertz	Micrometer/Eddy Current Thickness
Laser Diameter Gauging	Eddy Current Displacement	Laser Triangulation Gauging
Ultrasonic Wall Thickness	Multi-Layer Interferometry	Nuclear Transmission
Air Calipers	Machine Vision	Nuclear Backscatter

**SME Gauge for
Sheet & Film Thickness Profile**



Non-Nuclear

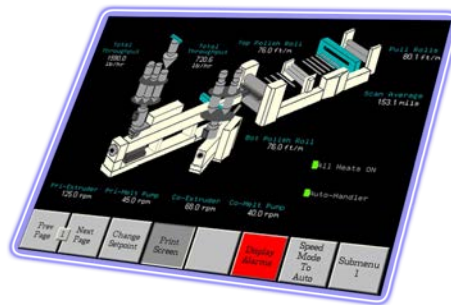
Non-Contact

**On-Cal 3 Thickness Measurement for
Calendered Materials**



Control

Total Process Control



FACTS Control Solutions

All of the **FACTS** Total Control Solutions are based upon an industrial hardened architecture that provides functionality specifically targeted for applications within the rubber and plastics industries. Each Total Control Solution is engineered to fully integrate the entire process and eliminate islands of automation. The **FACTS** Total Control Solution is a flexible and scaleable platform. Each control system is equipped with:

- Integrated Speed Control
- Temperature Control
- Tension Control
- Torque Control
- User Configurable Trend Displays
- Alarming
- Security System
- Product Code Support
- Fully Automatic Melt Pump Control
- Cold Start Protection
- Feed Forward Biasing
- Rate of Change Control
- Multiple HMI Displays
- Remote Viewing

Retrofitting Obsolete Control Systems

FACTS, Inc. provides new control systems for existing extrusion lines. Many of our customers have existing lines with obsolete controls. **FACTS, Inc.** has specific experience in replacing control systems such as those listed here.

Replacement Programs for:

- Davis Standard 301/401
- David Standard Epic I and Epic II
- Welex Ultima 1, 2, 3
- Egan CMR
- Eurotherm EM-1, Em-2
- HPM EPM (EM 1 with DOS HMI)
- Battenfeld Extrol



Old



New HMI



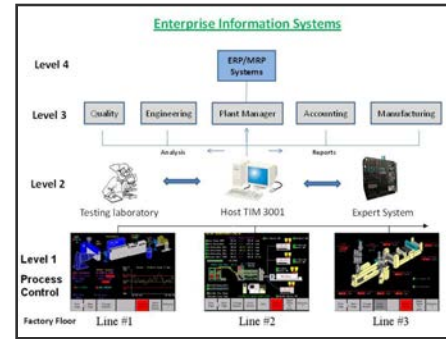
Old

Retrofit Offerings Include Complete Replacement Of:

- HMI
- PLC I/O
- Power Panels

Inform

Information Management Systems



Critical factory floor data is communicated to your maintenance, engineering, quality, process, and management groups. The **FACTS** Total Information Management System connects your factory floor to your enterprise and provides: Data Collection & Logging; Event Logging; Process Analysis; Reporting; and Dashboards

Host Link: Data Capture Server



- Concurrent automatic data capture
- Real Time display of key statistical quality parameters
- Link for data collection from FACTS control & monitoring systems in flat (*.csv) file format
- Connect future lines to Host interface via LINK



System/Configuration Editor

- Use the tool FACTS uses for system configuration
- User screen additions or modifications
- Alarms, Math, I/O Logic, Security Codes and Text Variables editable

Analysis Program



- Comprehensive SQC/SPC and process analysis
- Color trend plotting of historical data
- Trend, X-Bar, Range and Histogram charting
- Event log display
- Multi Line Capable -- Only 1 per facility necessary
- Comprehensive SQC/SPC and process analysis



Remote Support & Configuration

- Access your system remotely via Modem or Internet
- Save System Configurations to Host hard drive for backup
- Send New Configurations to HMI/Control Systems via Ethernet
- Allow FACTS Inc. access to your system for support:

Help troubleshoot problems on line
Upload & download system configurations
Update software revisions directly to the control system(s)



FACTS, Inc.™

Measure ... Control ... Inform

FACTS, Inc.
2737 Front Street
Cuyahoga Falls, Ohio 44221

T: (330) 928 2332
F: (330) 928 3018

Over the past 20 years, **FACTS** has provided over 800 systems to the polymer industry, all of which are fully supported today.

Simple Support

- 24/7 Technical Support
- No Contracts Required
- Field Service Engineers
- Training and Spare Parts