



Optional Autofeed Controller for Powders or Liquids

# FACTS

## TMC 6001FS

Rubber & Plastics Industry  
Total Mixer Control Systems

### Experienced in Rubber & Plastics Batch Mixing including:

- Tangential Machines
- Intermesh Machines
- Tilt Mixers

Only **FACTS** integrates both control and management of your manufacturing process, equipment, and job histories to provide optimum production efficiency.

Specialized Control Strategies for:

- Mixer steps by
  - Time and/or
  - Temperature and/or
  - Energy
- Feeder Control
  - Self tuning

### An integral part of your TMC 6001FS Mixing System is the TIM 3001 NT Host System:

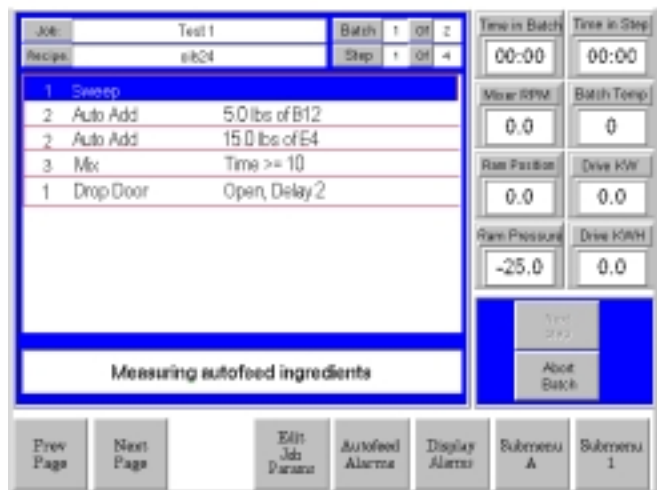
- Off-line data collection and complete analysis for historical data (i.e. batch trending, batch overlays, SQC charting, X/Y analysis, etc.)
- Complete hardware and software
- Transaction logging of any or all operator activity such as set-point changes as well as logging of all alarms

### Recipe Software

- Tabular text configuration editor empowers you to grow your process as your production needs change.

### Configuration Editor

- Graphical user interface
- Point & click recipe builder enables quick and accurate recipe creating and editing.



Batch Action Display

The **FACTS TMC 6001FS Total Mixing Control System** is designed for integrated and centralized control of your entire mixing and compounding process.

The TMC 6001FS uses a high-resolution color touchscreen for the operator to view and interact with the process. The **TMC 6001FS** is operator-configurable, requires no computer skills and comes as a complete software system configured for your specific process.

### The application of Total Mixer Control has resulted in a fast payback as measured by:

#### Mixing Operations

- Increased Productivity
- Consistency
- Reduced Downtime
- Labor

#### System Highlights

##### Operator Ease of Use

- Menu Driven
- Highlighted Mix Step
- Alarm Presentation
- Touchscreen

##### Single Product Code Setup for:

- Step operations
- Mixer control points
- Feeder subsystems

##### Specialized Monitoring and Control for:

- Mixer recipes
- Mixer control points
- Feeder subsystems

##### Specialized Displays for:

- Production
- Quality Assurance
- Maintenance

##### Trend Plots for:

- Current batch variables
- Multiple batches for 24 hours

#### Downstream Processing & Converting

- Improved Quality
- Increased Productivity
- Reduced Scrap

- Batch trend display
- Multiple batch trends
- Control Screens
- Manual Backup Controls

- Auxiliary systems
- Batchoffs
- Downstream systems

- Auxiliary equipment
- Batchoffs
- Downstream systems

- Management
- Engineering
- Multi-Language



## Weigh Scale System

### Additional Features

- Real Time Trend Plotting
- Product recipe system
- Security code system
- Cascade/strategy loop control (configurable)
- PID loop control (configurable)
- Numerous **Mixing Industry Specific** Features
- Remote Boot Option
- Master/slave speed control (configurable)
- Alarm/new alarm function
- Math function calculations
- Transaction & Alarm logging via **3001NT Host**
- Boolean logic functions for complex process logic operations
- Digital speed control loops for all speed loops

#### Optional Integration of:

- Automatic Material Feeders
- Manual Material Feeders
- Operator Prompted Material Feeders
- Minors Preparation
- Batchoffs
- Downstream Equipment

#### Optional Material Tracking Micro Batchers & Weighing Systems:

- Off line Minors preparation
- Operator Prompted Material Feeders
- Material Staging for Multiple Product Codes

**FACTS, Inc.**  
**2737 Front Street**  
**Cuyahoga Falls, Ohio 44221**  
**Phone: (330) 928 2332**  
**Fax: (330) 928 3018**  
**e-mail: facts@facts-inc.com**

Visit our web page: [www.facts-inc.com](http://www.facts-inc.com)

### Software Options

- Real Time SQC Displays
- Full Line Graphics Operator Interface
- SQC Data Entry & Display Station
- Feeder Control Interface
- Material Tracking
- Micro Batch Controllers
- Silo Inventory
- Total Resin Consumption
- Production Report Generator
- Communications support for
  - Feeder Subsystems
  - Batchoffs
  - Downstream Equipment
  - Remote control or display stations
  - Local or remote printers
  - Bar Code readers & printers
  - Intelligent peripherals such as scales & digitizing calipers

### Hardware Specifications

- Freestanding NEMA 12 enclosure - environmentally protected
  - Complete power regulation and isolation
  - Chemical purification for corrosion prevention
  - Heat Exchanger included
- PLC process I/O
- 32 bit processor in a distributed architecture
- Real Time Executive operating system
- 17" sealed high-resolution color touchscreen terminal
- Environmental capabilities
  - Electrical noise - line conditioner supplied
  - Electrical variation +/- 20%, short-term variations +/- 50%
- Ambient temperature 32-125 °F (0-50 °C)
- Relative humidity - 0-95% non-condensing
- Power Requirements
  - 120 or 220 volts AC nominal, +/- 20% (customer specified)
  - 60 Hz or 50 Hz customer specified, 2500VA
  - heater exchanger
- Physical
  - Main control cabinet/operator's station - 90"H x 36"W x 28"D or custom fit to your application

**FACTS Total Control Solutions means  
 Total Profit Control.**

**The FACTS Formula**  
**+ Increased Productivity**  
**+ Improved Quality**  
**+ Improved Efficiency**  
**+ Reduced Material Usage**  
**+ Reduced Labor**  
**+ Reduced Scrap**

**= Increased Profits**