

FACTS, Inc.

PROCESS CONTROL SYSTEMS

Measure .. Control .. Inform

TCC 150-17

TOTAL CALENDER CONTROL SYSTEMS

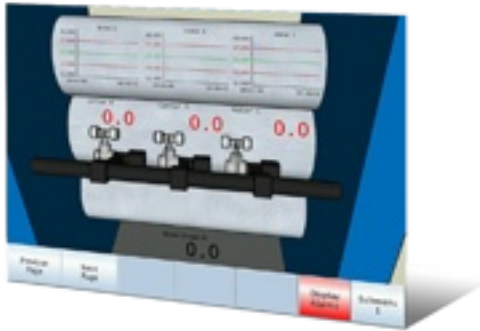
The **FACTS** Total Calender Control (TCC) is designed specifically for optimized calender gauge control.

FACTS can coordinate and control the complete calender line.



Full Line Control

- | | |
|--------------------------|--------------|
| Gauge Control | Temperatures |
| Feed Mills | Tensions |
| Extruder Systems | Let-offs |
| Calender speeds & ratios | Windups |
| Line speeds & ratios | |



System Capabilities

- | | |
|------------------------------|-------------------------|
| Electric Screw Actuators | Hydraulic Actuators |
| Roll Bending/Straightening | Cross-Axis |
| Hydraulic Cushion | Servo Position Control |
| Speed Compensation | Roll Prepositioning |
| Motorized Valves | Servo Position Control |
| Roll Temperature Control | Mill Knife Position |
| Extruder Speed & Temperature | Speed & Tension Control |

System Highlights & Benefits

- | | |
|-----------------------|---------------------------|
| Precision Control | Material Savings |
| Easy to Use | Increased Productivity |
| Low Cost of Ownership | Reduced Scrap |
| Adaptable | Reduced Maintenance Costs |
| Expandable | Reduced Labor |
| Proven Performance | Improved Quality |

Related Products

Total Information Manager Host System

- Data collection
- Graphical analysis of historic data
- Configuration editor
- Remote support

On-Cal 3 Thickness Gauge

A non-nuclear, precision gauge for the measurement of calendered materials, such as rubber, vinyl and other non-metallic polymers.

SME Gauge for Calendered Web Thickness Profile

The **FACTS** SME Gauge is THE non-nuclear solution for calendered web thickness measurement. The SME single side scanner provides a rugged, high speed scanning platform and is designed for precise and repeatable performance with an extended life of operation, even in harsh environments.

FACTS, Inc.
PROCESS CONTROL SYSTEMS

FACTS, Inc.
2737 Front Street
Cuyahoga Falls, Ohio 44221

T: (330) 928 2332
F: (330) 928 3018
www.facts-inc.com

TCC 1600

TOTAL CALENDER CONTROL SYSTEM

Total Calender Line Control

Only **FACTS** integrates both control and management of your manufacturing process, equipment and job histories to provide you optimum production efficiency.

The **FACTS TCC 150-17** is a cost effective solution for small calender control applications. The **FACTS TCC 150-17** is designed specifically for optimized calender gauge control thru the use of "On-Calender" fixed gauges and/or post calender sheet scanners. The **FACTS** "On-Calender" sensors enable the **TCC 150-17** to provide precise machine direction and cross direction control of the calender process.

The system incorporates a high-resolution 19" LCD flat panel color touchscreen for operator command input plus data and graphics display. The **TCC 150-17** is operator-configurable, requires no computer skills and comes as a completely configured software system for your specific line.



On-Calender Gauge Advantages

- Short Transport Lag
- Continuous Measurement of Product in All Measurement Zones
- High Accuracy
- Stable Low Drift Design



Additional Control Features

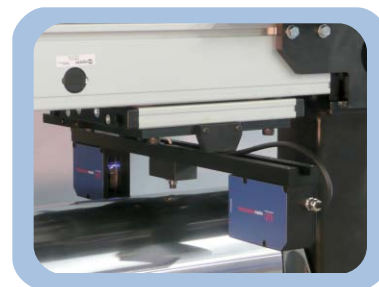
- Real Time Trend Plotting
- Product Recipe System
- Security Code System
- Cascade/Strategy Loop Control (configurable)
- PID Loop Control (configurable)
- Transaction & Alarm Logging (with optional 3001 Host)

Options & Other Products

- Statistically Optimized Target Control
- Actuator Upgrades
- Width Measurement
- Servo Trim Knives
- Roll Surface Temperature Control
- Total Line Control
- Low Profile Traversing Bubble Piercer
- Vision Based Cord Spacing Measurement
- Balance Measurement

Scanning SME Gauge Advantages

- Post calender true thickness measurement
- Non-nuclear based measurement
- Excellent choice when on-calender measurement is not practical
- Cost effective and easy to maintain



FACTS, Inc. is the leader in calender gauge control, as well as overall process line control solutions. **FACTS** has provided systems worldwide to world class manufacturers in the tire and rubber, conveyor belting, power transmission, and hose industries.

FACTS, Inc. routinely provides new and existing process lines with complete electronic control systems and integrated HMI. Controls provided include, but are not limited to: temperature, speed and pressure control; sequence control; drive and heater systems; profile measurement and control.

FACTS, Inc. offers you experience at your fingertips with 24/7 support via Internet or modem.

FACTS, Inc. provides the tools to control your bottom line. Contact us today.



FACTS, Inc.
2737 Front Street
Cuyahoga Falls, Ohio 44221

T: (330) 928 2332
F: (330) 928 3018
www.facts-inc.com