

Cost Effective Upgrade of Your Existing Web Profile Scanner

Avoid down-time by upgrading, retrofitting or replacing your existing scanning system with a system from **FACTS, Inc.**



Utilizing our Universal Scanner Interface (USI) technology, **FACTS, Inc.** retrofits and upgrades 'O' and 'C' frame style scanners.

Retrofits & Upgrades

- Cost effective solution when the existing scanner mechanical frame is in good condition and the source has sufficient remaining useful life.
- Complete new frame systems, offering an array of measurement technologies, are also available.
- **FACTS** retrofit solutions retain the existing scanner frame and mechanical components, along with the source and detector.
- All electronics are replaced. A new frame controller and new console system is provided. The only electronics that are normally retained is the detector preamp in the detector head.
- Full Auto Profile Control, APC, is an available option.

FACTS Capabilities

FACTS is a complete provider of turn key automation systems for continuous processes. Our capabilities include Total Line Control, heater and drive panels, data collection, analysis & reporting tools, profile control systems, new scanning systems and scanner retrofits.

Benefits & Payback

- ▶ **Eliminate Obsolete Electronics**
- ▶ **Minimize Cost**
- ▶ **Reduce Maintenance**
- ▶ **Improved Service & Support**
- ▶ **Add Features & Functions**

Applications

- Plastic sheet and film (cast & blown)
- Calendering (rubber & plastics)
- Coating lines
- Asphalt shingle roofing lines

PROFILE SCANNER UPGRADES, RETROFITS & COMPLETE NEW SYSTEMS

TIM 3001 Host

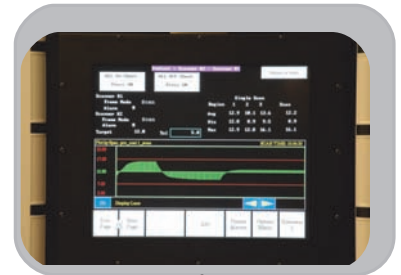


Historical Data Capture,
Process & Product Analysis

Total Profile Control 5001
Console



Optional Remote Station



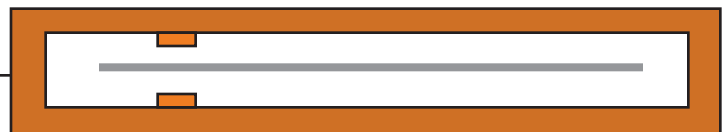
Cat 5 EtherNet Cable

Cat 5 EtherNet Cable

The **FACTS** USI was specifically developed to interface to a wide variety of vendor and sensor technologies, thus enabling the use of a standardized system. This provides a full featured state-of-the-art system that is easy to maintain and support. Since the frame and source are retained, installation time and cost are greatly reduced. Source disposal costs are also deferred and thus minimized.

Machine
Direction
Control
With
Optional
APC

FACTS
USI
Universal Scanner Interface
as Frame Controller



'O' or 'C' Frame Scanner

FACTS Inc. is the leader in process control technology for the polymer market. In fact, we wrote the book on extrusion control—literally. For the Society of Plastics Engineers, **FACTS** penned the chapter on Extrusion Control in the “Guide on Extrusion Technology & Troubleshooting.”

FACTS Inc. routinely provides new and existing process lines with complete electronic control systems and integrated HMI. Controls provided include, but are not limited to: temperature, speed and pressure control; sequence control; drive and heater systems; profile measurement on control.

FACTS Inc. offers you experience at your fingertips with 24/7 support via Internet or modem.

FACTS Inc. provides the tools to control your bottom line. Contact us today.

