

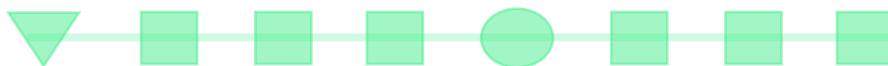
# FACTS, Inc.

## PROCESS CONTROL SYSTEMS

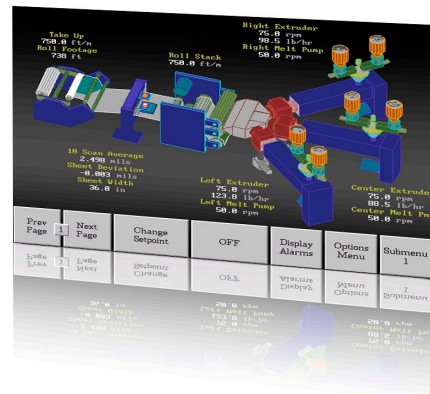
Measure .. Control .. Inform

# EXTRUSION PROFILE TOTAL PROCESS CONTROL

The **FACTS** Total Line Control (TLC) System integrates and centralizes control of the entire extrusion profile process.



Applicable to all Extrusion Profile Processes including:  
Siding...Pipe...Tubing...Hose...Wire & Cable



## Full Line Integration

- |                           |                   |
|---------------------------|-------------------|
| Volumetric Feeders        | Extruder          |
| Gravimetric Feeders       | Temperatures      |
| Melt Pump                 | Pressures         |
| Laser Gauging             | Speeds            |
| Ultrasonic Gauging        | All Line Deives   |
| Vacuum Level Controls     | Color Measurement |
| Pullers & Winders         | Scanners          |
| Heater & Drive Enclosures | Data Reporting    |
| Tension Controls          | Data Collection   |

## Benefits and Payback

### Quality Benefits

- Consistent Operation
- Continually Improve Line, not just run it
- Closed Loop Control

### Increase

- Line Speed
- Material Efficiencies

### Decrease

- Operator Requirements with a simple interface
- Maintenance Questions with SQL logs
- Scrap by staying on Spec
- Downtime by getting on spec fast

### Start Up/Setup

- Fast
- Consistent Parameters
- Whole Line Coordinated Start-up

## System Features

### Operator Ease of Use

- Menu Driven
- Interactive Line Graphics
- Alarm Presentation
- Real-Time SQC charts
- Custom Control Screens
- 17" touchscreen terminal
- Trend plotting of ALL inputs

### Freestanding NEMA 12 enclosure

- Complete power regulation & isolation
- Heater & Drive Panels

### Integration of Gauging Systems

- Laser (Multi Axis)
- Laser (Total Profile)
- Ultrasonic Wall Thickness

### Specialized Displays For:

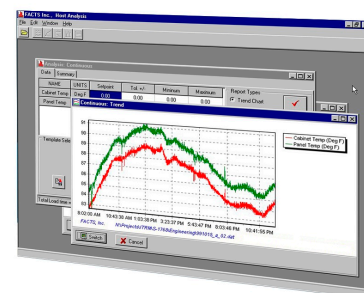
- Production
- Quality Assurance
- Management
- Maintenance
- Engineering
- Multi-Language

### Single Product Code Setup For:

- All Control Points
- Multi-loop Control Strategy
- Control Tuning

## Total Information Manager Host System

Data collection, graphical analysis of historic data, configuration editor, remote support



# FACTS, Inc.

## PROCESS CONTROL SYSTEMS

Doc . 1515-00

### FACTS, Inc.

2737 Front Street  
Cuyahoga Falls, Ohio 44221

T: (330) 928 2332

F: (330) 928 3018

www.facts-inc.com

# EXTRUSION PROFILE TOTAL PROCESS CONTROL SYSTEM



## System Highlights

Only **FACTS** integrates both control and management of your manufacturing process, equipment and job histories to provide your optimum production efficiency.

### System Setup & Product Codes

NO PROGRAMMING REQUIRED  
100s of Unique Product Codes  
Configurable System Design  
Selectable Security System at All Functional Levels  
Real Time Trend Plots of All Process Variables  
Real Time SQC Charts

### Product & Process Analysis

Process Analysis and Historical Reporting with the  
**Total Information Manager HOST**  
Historical Trend Plots & SQC Charts of every parameter  
Logs for Data, Operators and Alarms

### Support for Upper Level Functions such as:

Job scheduling, Job Tracking, Production Tracking Reports, Raw Material Usage/Reports, Networking Interface to Customer MRP & MIS Systems

## Additional Control Features

Real Time Trend Plotting  
Cascade/strategy loop control (configurable)  
PID loop control (configurable)  
Remote Boot Option  
Master/slave speed control (configurable)  
Cold start protection  
Thread/start-up mode  
Failed/broken thermocouple override  
Alarm/new alarm function  
Math calculations  
Transaction & Alarm logging (with optional TIM Host)  
Boolean complex logic functions

## Optional Software

Full Line Graphics Operator Interface  
SQC Data Entry & Display Station  
Communications support for:  
Remote control or display stations  
Bar Code readers & printers  
Real Time SQC Displays  
DeviceNet, Profibus, Ethernet, etc.  
Intelligent peripherals requiring complex protocol support (e.g. Nuclear or LASER profile gauges, and gravimetric feeders)  
Melt Pump Control  
Gravimetric Control, Silo Inventory, Total Resin Consumption  
Production Report Generator

**FACTS** Inc. is the leader in process control technology for the polymer market. In fact, we wrote the book on extrusion control—literally. For the Society of Plastics Engineers, **FACTS** penned the chapter on Extrusion Control in the “Guide on Extrusion Technology & Troubleshooting.”

**FACTS** Inc. routinely provides new and existing process lines with complete electronic control systems and integrated HMI. This control includes but is not limited to: sequence control, drive systems, both temperature and thickness profile measurement and control, and pressure, temperature and speed control.

**FACTS** Inc. offers you experience at your fingertips with 24/7 support via Inernet or modem.

**FACTS** Inc. provides the tools to control your bottom line. Contact us today.

