

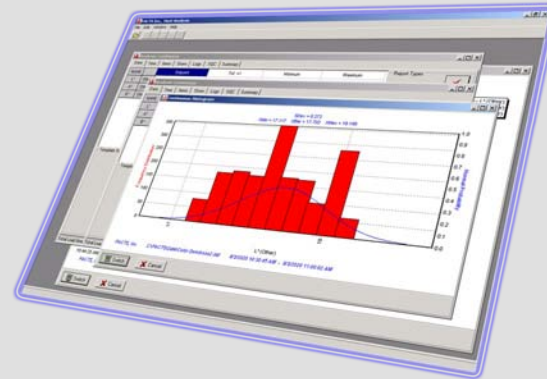
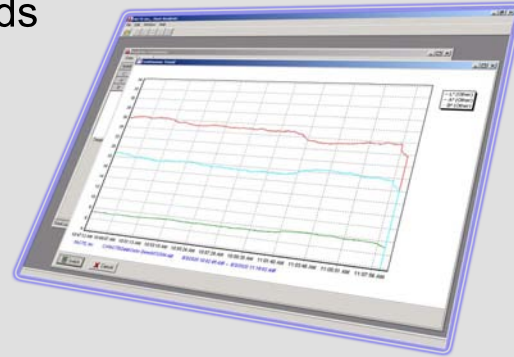
Inform

Information Management Systems



Qualified factory floor data is a natural byproduct of effective automation and is made available to your maintenance, engineering, quality, process, inventory and management groups. The **FACTS** Total Information Management System connects your factory floor to your enterprise and provides:

- Data collection & logging
- Event logging
- Process analysis
- Reporting
- Dashboards



FACTS, Inc.™

Measure ... Control ... Inform

What We Do...

FACTS is a global supplier of **PROCESS CONTROL**, **ON-LINE MEASUREMENT** and **INFORMATION MANAGEMENT** solutions to the plastics and rubber industries. *Call us at 330-928-2332.*

Factory Automation Controls & Technical Services

Extrusion:

- Hose
- Pipe
- Tube
- Profile
- Sheet
- Film
- Tire Tread
- Wire/Cable

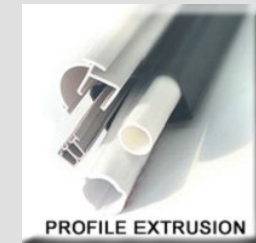
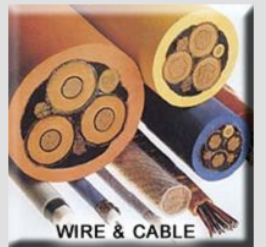
Calender

- Mixing
- Thermoforming
- Converting
- Blow Molding
- Injection Molding
- Compounding
- Coating
- Drive Systems

CONTROLLING THE PROCESS GLOBALLY



OVER 800 SYSTEMS IN 12 COUNTRIES



FACTS, Inc.™
Measure ... Control ... Inform

FACTS, Inc.
2737 Front Street
Cuyahoga Falls, Ohio 44221

T: (330) 928 2332
F: (330) 928 3018

Over the past 20 years, **FACTS** has provided over 800 systems to the polymer industry, all of which are fully supported today.

www.facts-inc.com

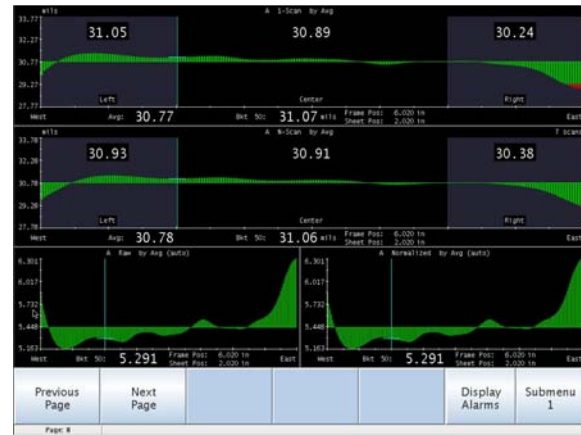
Simple Support

- 24/7 Technical Support
- No Contracts Required (Contracts are Available Upon Request)
- Support Provided By Our Own Process-Knowledgeable Engineers



Measure

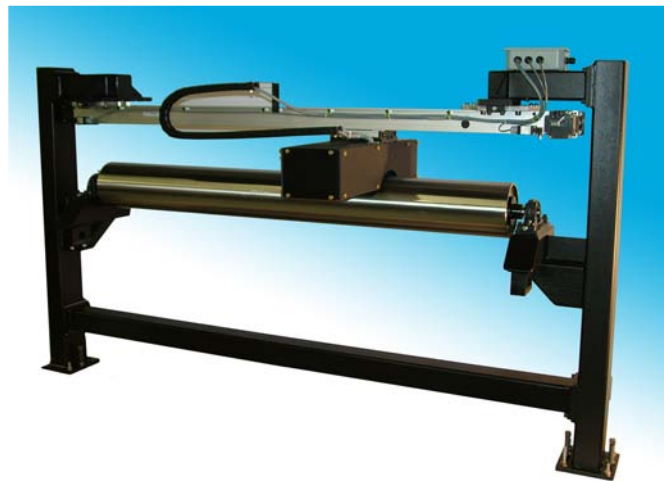
On-Line Measurement Technologies



FACTS has successfully integrated a wide range of sensor technologies that become cost effective applied measurement solutions. We help our Customers get “on- spec” faster and stay there longer!

ON-CAL 3 Calender Gauging	Terahertz	Micrometer/Eddy Current Thickness
Laser Diameter Gauging	Eddy Current Displacement	Laser Triangulation Gauging
Ultrasonic Wall Thickness	Multi-Layer Interferometry	Nuclear Transmission
Air Calipers	Machine Vision	Nuclear Backscatter

SME Gauge for Sheet & Film Thickness Profile



Non-Nuclear

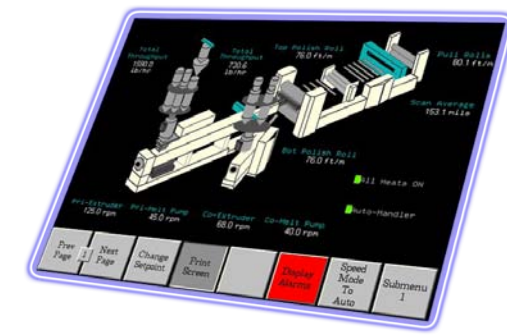
Non-Contact

On-Cal 3 Thickness Measurement for Calendered Materials



Control

Total Process Control



FACTS
Control
Solution

All of the **FACTS** Total Control Solutions are based upon an industrial hardened architecture that provides functionality specifically targeted for applications within the rubber and plastics industries. Each Total Control Solution is engineered to fully integrate the entire process and eliminate islands of automation. The **FACTS** Total Control Solution is a flexible and scalable platform that results in complete machinery independence. Each control system is equipped with:

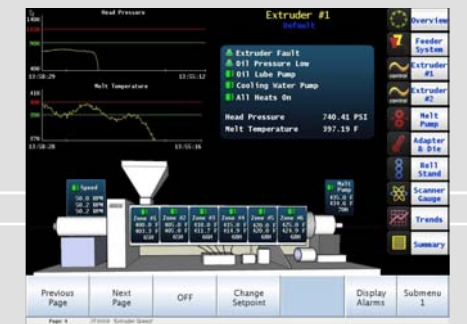
- Integrated Speed Control
- Temperature Control
- Tension Control
- Torque Control
- User Configurable Trend Displays
- Alarming
- Security System
- Product Code Support
- Fully Automatic Melt
- Pump Control
- Cold Start Protection
- Feed Forward Biasing
- Rate of Change Control
- Multiple HMI Displays
- Remote Viewing

Retrofitting Obsolete Control Systems

FACTS, Inc. provides new control systems for existing extrusion lines. Many of our customers have existing lines with 1990s technology controls. **FACTS, Inc.** has specific experience in replacing control systems such as those listed and pictured here.

Replacement Programs for:

- Davis Standard 301/401
- David Standard Epic I and Epic II
- Welex Ultima 1, 2, 3
- Egan CMR
- Eurotherm EM-1, Em-2
- HPM EPM (EM 1 with DOS HMI)
- Battenfeld Extrol



Retrofit Offerings Include Complete Replacement Of:

- HMI
- PLC I/O
- Power Panels
- Drives
- Motors

